



**BAINES
MASONRY**
Quality First

Tasman[®] Retaining Wall System

Choose the original Tasman[®] block. Beware of imitations!

- ✓ Prestige & Quality
- ✓ Near Vertical Walls
- ✓ Do It Yourself
- ✓ No Concrete Footings
- ✓ Flexible - 90° Corners
Steps, Straight and
Curved Walls Achievable!



Australian Owned, Designed and Manufactured

member of



BAINES MASONRY
900 Wilton Road (P.O. Box 89) Appin NSW 2560
Tel: (02) 4631 1383 Fax: (02) 4631 1402
info@bainesmasonry.com.au
www.bainesmasonry.com.au

Product Information: Tasman® Blocks



Tasman Wall Block
390mm x 225m x 200mm
13 per sqm
75 per pallet
Code 225-01



Tasman 200mm Cap
200mm x 225m x 60mm
5 per lineal m
300 per pallet
Code 60-230



Tasman Cap
390mm x 240m x 60mm
2.5 per lineal m
120 per pallet
Code 60-240



Tasman Full Corner
145mm x 340m x 200mm
Available in
left or right corner
Code 225-34



Tasman Half Corner
145mm x 235m x 200mm
Available in
left or right corner
Code 225-14

*Note: For Tasman Walls over 660mm high
please seek specific engineering advice*



Computer Design Program Available
visit www.bainesmasonry.com.au/contactus.htm
Complies with AS 4678 & MA 53

Tasman Colour Range



Appin Stone



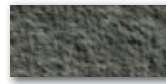
Penrose



Yellow Rock



Oakdale



Charcoal



Opal White



Bushrock



Red Rock

Colours displayed in this brochure are to be used as a guide only. Colours are as close as printing process will allow. Displays in stores may vary to actual colour due to batch variations. Obtain samples from Baines Masonry for current batch colour. Care should be taken to order sufficient product to complete job at the one time to avoid batch variation. Surplus blocks are not returnable. No claim after 7 days or once products have been incorporated in construction. Not all colours available in every region please check with your supplier



SRW® Products for Segmental Retaining Walls



SRW Adhesive

SRW Adhesive has been time-tested and proven its performance in countless projects for over 25 years.



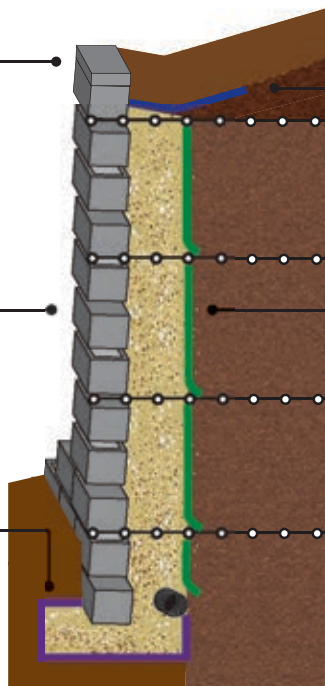
SRW RWX

Specialty Seal™ RWX Retaining Wall X-treme protects retaining wall blocks against damaging elements like water intrusion.



SRW SS5

Used to separate the leveling pad materials from the sub-base which increases strength.



SRW NW4.5

Used as separation at the top of the wall to prevent soil migration into the drainage aggregate.



SRW SB3

Used as filtration behind the retaining wall, keeping debris out and water flowing through.



SRW Geogrid

SRW geogrid stabilises retaining walls, preventing premature wall failure and increasing life span.



Refer to Evaluation and Installation Guide or website for specifications.
Check with your local Council to ensure all local building codes are complied with.

Tasman® is a registered trade mark of Baines Masonry and is used under licence.
Please see our full terms and conditions on our website www.bainesmasonry.com.au